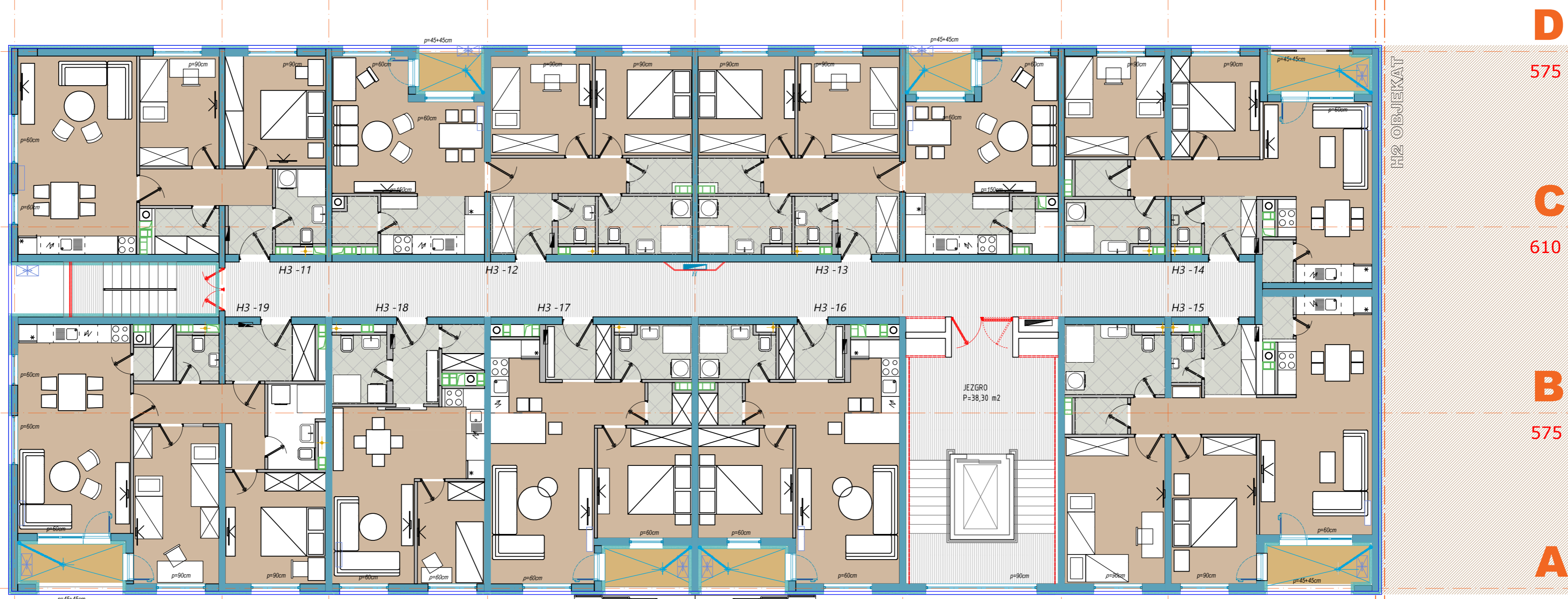
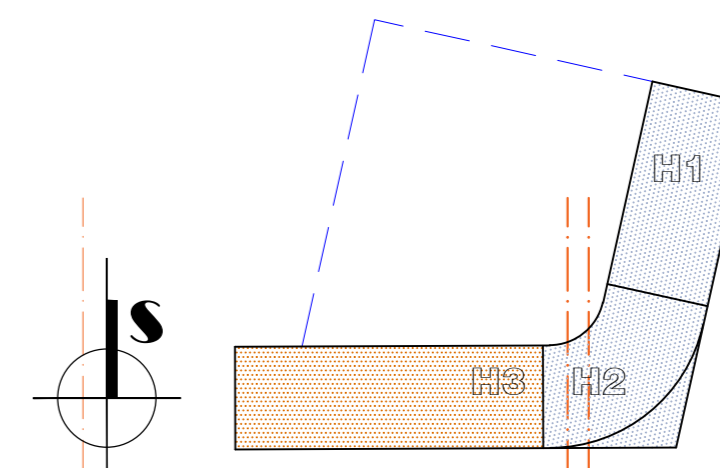


OSNOVA KARAKTERISTIČNE ETAŽE

lamela H3 = 2pod + pr + 9 spratova

- STAN 11: P=61.52 m²
- STAN 12: P=67,23 + lodja 1,84m²= 69.07 m²
- STAN 13: P=67,42 + lodja 1,84m²= 69.26 m²
- STAN 14: P=58,24 + lodja 2,79m²=61.03 m²
- STAN 15: P=76,97 + lodja 3,13m²= 80.10m²
- STAN 16: P=48,15+ lodja 2.58m² =51.00m²
- STAN 17: P=48,15+ lodja 2.58m² =51.00m²
- STAN 18: P=39.30 m²
- STAN 19: P=73,52+ lodja 3,13m² =76.65m²



13
680

12
350

11
520

10
680

9
680

8
520

7
350

6
680

5 4

D

575

C

610

B

575

A